



LIVERMORES
THE ESTATE AGENTS

1 Bedrooms
House - End Terrace
Located in Dartford

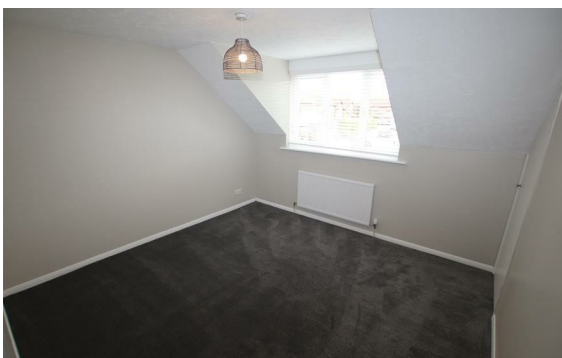
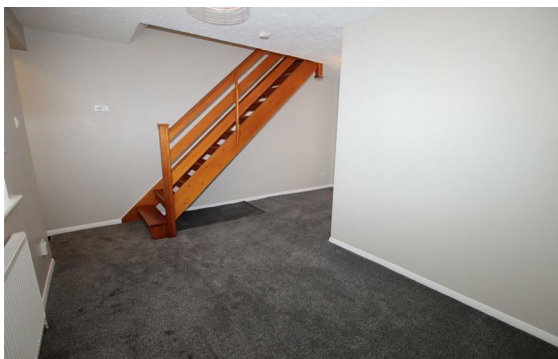
£1,300



lettings@livermores.co.uk

www.livermores.co.uk

01322 311427



Situated in the sought-after area of Knights Manor Way, Dartford, this charming one-bedroom terraced house is now available for rent. This property boasts a well-proportioned reception room, perfect for relaxing or entertaining guests. The one bedroom offers comfortable living spaces, ideal for professionals seeking a cosy home.

One of the standout features of this property is its excellent location. Residents will benefit from being close to a variety of amenities, including shops, restaurants, and recreational facilities, ensuring that all your daily needs are within easy reach. Additionally, the property is conveniently situated near public transport links, making commuting a breeze.

For those with vehicles, allocated parking is provided, adding to the convenience of this lovely home. The property is available immediately, allowing you to settle in without delay.

Energy Efficiency Rating:

Agents Note: Whilst every care has been taken to prepare these particulars, they are for guidance purposes only. All measurements are approximate and are for general guidance purposes only and whilst every care has been taken to ensure their accuracy, they should not be relied upon and potential buyers/tenants are advised to recheck the measurements.

LIVERMORES
THE ESTATE AGENTS

1 Hythe Street
Dartford
Kent
DA1 1BE

01322 311427

lettings@livermores.co.uk

www.livermores.co.uk